



Furniture dealers

Lower costs and improved customer service through vehicle tracking

Do you know where your drivers are going?

Do you know where your drivers are and how long they have been there? Do the drivers always stick to the optimum planned route without detours? It is your truck and your diesel that is out on the road.

Furthermore, why do all delivery trucks always return at five-minute intervals, punctually at the end of the driver's shift, no matter how long their tours were?

How can your business improve?

Service is very important in the furniture industry because it provides the opportunity to set yourself apart from the competition. Your customers are taken care of completely, from good advice to the purchase, but can you tell them exactly when the furniture will arrive - more precisely than "in the morning" or "in the afternoon"?

This can cause your customers to wait all day and possibly call your dispatcher several times to get specific information. They then call the driver, who is just heaving an upholstered chair up a narrow staircase and would rather do anything than answer the phone.

Become furniture store of the year!

With our telematics solutions, you or your dispatcher will know exactly where the truck is at any precise moment, whether it is almost at the front door or if it is stuck in traffic.

ENAIKOON Telematics Solutions Features

Always be in the know

- current location and route are available at any time online without tedious phone calls to the driver
- management of trucks and fleet
- data analysis for creating optimised schedules
- verifying of adherence to the route

Customer information system improvement

- Increased accuracy of indicated delivery times
- Immediate automated information in case of delays through continuous monitoring of the delivery times

Efficiently reduce costs by knowing

- exactly where your team is and how long they will be there
- the time it takes to deliver an upholstered suite
- the length of travel time between deliveries
- the reason for delays (e.g. traffic jams, extra journeys, etc.)
- where the truck is, between the final customer and the yard
- the trucks' acceleration in relation to the suggested vehicle speed, significantly reduces fuel consumption

Remote disablement

- no more unauthorised vehicle use (e.g. over the weekend or after business hours)
- notified immediately of any unauthorised truck use during non-business hours
- stop the misuse of trucks with a simple mouse click using the remote disablement function

GPS / GPRS-aided vehicle monitoring optimises delivery businesses

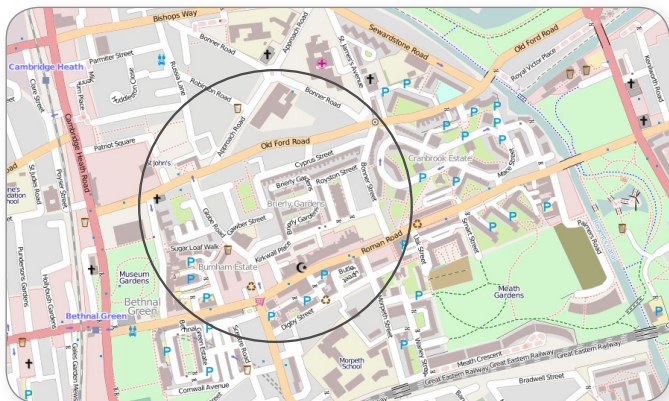
"Whether I'm on the road or in the office, I can always find the exact location of all deployed vehicles with my laptop and the ENAIKOON inViu Pro application. If a customer calls and enquires about the delivery time of his goods, I can give him an answer immediately." This is possible because Piotr Frank knows, literally in seconds, where the delivery truck is currently located. "With the new system, we have been able to reduce the number of incorrect deliveries and shorten the time taken to clarify them."

Piotr Frank, Technical Director Brusendorf GmbH, Mittenwalde, Germany



Geofence: the ultimate remedy

A geofence is a "virtual electronic protective fence" around an area that needs to be monitored (e.g. your branch or a building site). You automatically receive an e-mail or an SMS, if deviations from the plan occur. For example, you will be notified if a machine does not reach the designated zone at the expected time or leaves it unexpectedly. This way you are always up-to-date and can take the appropriate action. If your equipment or truck ever gets stolen, our technology will find it using GPS.



Map data: [OpenStreetMap](#) | [ODbL 1.0](#), Tiles CC-BY-SA 2.0

ENAIKOON's telematics overview

- offering a large selection of different telematics modules, creating customised solutions for almost any possible application
- wireless communication in real-time so you always know what's going on
- powerful and secure web-based solution with:
 - no software installation required
 - data retrieval via any web browser or on your mobile phone
- automatic e-mail and text message reports for ease-of-use
- evaluations put you in the know: driver log-book, daily and weekly reports about individual drivers or equipment, break times, and speed profiles

Easy-to-use technology

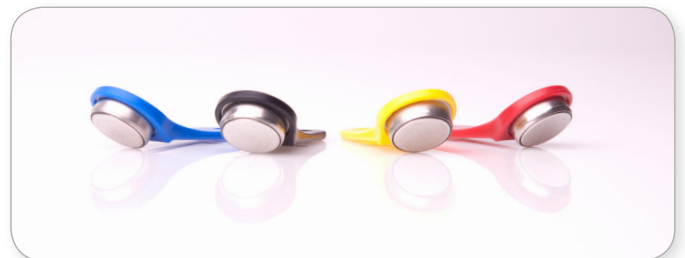
- installation of the device within minutes
- maintenance-free operation with detailed manual
- hotline with local call charges

Useful add-ons

ENAIKOON driver-id

An inexpensive personal identification system, that can be used for a myriad of applications, such as allocation control.

- working hours
- breaks
- care and appearance of the truck
- adherence to service intervals
- battery condition, fuel level



Mobile phone software inViu routes

If you are regularly on the road and want to keep an eye on things, we have the right software for Android, BlackBerry® and Windows® Mobile 6.5 phones.

"Made in Germany" quality you can trust

ENAIKOON

ENAIKOON GmbH
Helmholtzstr. 2-9
10587 Berlin
Germany

Tel.: +49 30 397475-30
Fax: +49 30 397475-40
info@enaikoon.com
www.enaikoon.com